

## Year 5 Maths - Week beginning Tuesday 14<sup>th</sup> April 2020

### Unit of work: statistics

This week's maths learning is all about data focusing on line graphs. You will also use line graphs in your Learning Journey work this week.

As this is new learning, here are some tutorial videos to help you:

<https://www.youtube.com/watch?v=l61owCcnrPI>

<https://www.youtube.com/watch?v=Opd1GDJjx4s>

If you can print the sheets out, you can write on the sheets. Then, glue your work into your blue maths book.

Don't worry if you don't have a printer, read the questions on the screen and use your blue maths book to write your answers in.

Some sheets give you an option of SET A or SET B or SET C. Because this is new learning, I suggest you do SET A (easier questions) or SET B (medium questions) first.

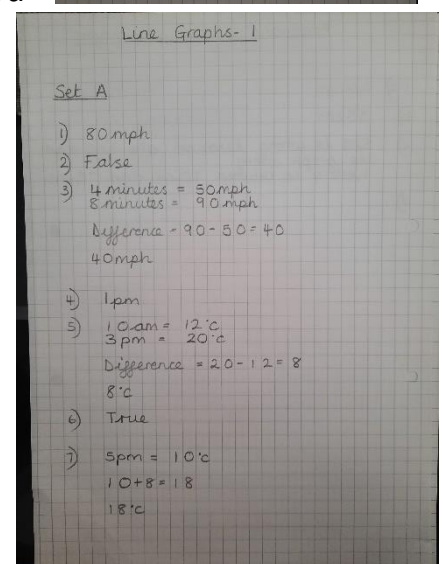
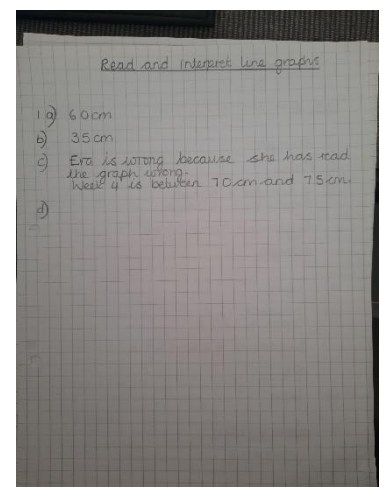
Then, when you are certain you know what to do, complete SET C (tricker questions).

If you'd like to share your work with me please email a photo, scan or word.doc to my email address by the end of the week. I will do my best to respond as quickly as possible.

The answers are attached for parents and carers who wish to mark their child's work.

### Success Criteria:

- 1) Write the lesson title at the top of your page and underline it with your ruler.
- 2) Watch the videos. You can pause, rewind and replay if you need to.
- 3) Answer the questions on your sheet or in your book.
- 4) Show all of your working out. Draw diagrams to help you – use a ruler!
- 5) Use neat, joined up handwriting.
- 6) Form your numbers correctly.
- 7) Use the answer sheets to mark you work. If you have made a mistake, use your purple pen to have another go.



Don't forget –MyMaths & Times Table Rockstars