

Anti-Bullying Policy

Reference: WP/Ethos and Distinctiveness

Original Policy date	October 2019	Statutory Policy - No
Strategic Board Approval	October 2019	
Reviewed and Updated		
Next Review Date	October 2022	Review cycle every 3 years
Author	WP/RR	www.acexcellence.co.uk
MAT Schools	Redhills Primary Shaldon Primary Collaton St Mary Primary Galmpton Primary	Totnes St John's Brixham Primary

Contents

Introduction	3
Links with other school policies and practices	3
Links to legislation	3
Part 1	5
Policy objectives:.....	5
Principles	5
1) Responsibilities	5
2) Definition of bullying	6
3) Forms of bullying covered by this policy	7
4) School ethos.....	7
5) Responding to bullying.....	8
<i>Cyberbullying</i>	9
<i>Sexual violence or sexual harassment</i>	10
<i>Discrimination</i>	10
What is a discriminatory incident?	10
Types of discriminatory incident	11
Responding to and reporting incidents	11
Responding to and reporting incidents	12
<i>Supporting pupils</i>	13
6) Preventing bullying.....	13
<i>Environment</i>	13
<i>Policy and Support</i>	14
<i>Education and Training</i>	14
7) Involvement of pupils.....	14
8) Involvement and liaison with parents and carers.....	15
9) Monitoring and evaluation	15
10) Useful links and supporting organisations.....	15
SEND	16
Cyberbullying.....	16
Race, religion and nationality	16
LGBT.....	16
Sexual harassment and sexual bullying.....	17

Introduction

'Striving for Excellence and caring for our children'

This policy is based on DfE guidance "[Preventing and Tackling Bullying](#)" and supporting documents. It also takes into account the DfE statutory guidance "[Keeping Children Safe in Education](#)".

Links with other school policies and practices

This policy links with a number of other school policies, practices and action plans including:

- Behaviour and discipline policy
- Child protection/Safeguarding policy
- Online safety and Acceptable use policies

Hebrews 10:24 says, "And let us consider how we may spur one another on toward love and good deeds"

Our school's approach to Anti-Bullying follows that of the Church of England Education Office, in that it seeks to be faith-sensitive and inclusive. It is under-pinned by Our Vision of "Spurring each other on with the courage to make positive difference to ourselves and others" and ensures that all of school life incorporates the values of the Christian Faith. These values are central to all that we do and determine how we will implement all policies and procedures. We want to ensure that through our gateways of Citizenship, Leadership, Expression, Exploration and Flourishing, all pupils and adults are shown how to be Compassionate, Forgiving, Determined and Honest individuals, who act with integrity and responsibility. By starting with our vision, we aim to ensure that all members of our school community understand our expectations, our practise and the ways in which we will implement policy

Links to legislation

There are a number of pieces of legislation which set out measures and actions for schools in response to bullying, as well as criminal and civil law. These may include (but are not limited to):

- The Education and Inspection Act 2006, 2011
- The Equality Act 2010

- The Children Act 1989
- The Education (Independent School Standards) Regulations 2014
- Protection from Harassment Act 1997
- The Malicious Communications Act 1988
- Public Order Act 1986

Part 1

Policy objectives:

This policy outlines what each school within the Academy for Character and Excellence will do to prevent and tackle all forms of bullying.

The Academy for Character and Excellence is committed to developing an anti-bullying culture where the bullying of children and young people is not tolerated in any form.

Principles

- Pupils have a right to learn in a safe and supportive environment, free from intimidation and fear.
- The welfare/well-being needs of all children and young people are paramount and pupils' needs (whether bully or targeted pupil) need to be separated from their behaviour.
- When bullying concerns are identified our schools will work in a restorative and solution focused way to achieve the necessary change.
- Pupils who are targeted will be listened to and supported.
- Pupils who engage in bullying behaviour will be listened to and encouraged to accept responsibility and change their behaviour.
- Staff will receive awareness-raising training regarding bullying prevention including effective, appropriate strategies for intervention.
- Where a concern arises, staff will receive ongoing support from Senior Managers with Pastoral responsibility.
- Parents will be made aware of our school's practice to prevent and to respond to concerns through parent information meetings, consultation processes and where necessary, their active participation in partnership with the school to resolve concerns involving their child.

1) Responsibilities

It is the responsibility of:

- The headteacher to communicate this policy to the school community, to ensure that disciplinary measures are applied fairly, consistently and reasonably.
- Local committee governors to take a lead role in monitoring and reviewing this policy.
- All staff, including: governors, senior leadership, teaching and non-teaching staff, to support, uphold and implement this policy accordingly.
- Parents/carers to support their children and work in partnership with the school.
- Pupils to abide by the policy.

2) Definition of bullying

'By definition bullying is behaviour that intentionally and persistently causes distress to others'

Bullying is "behaviour by an individual or a group, repeated over time that intentionally hurts another individual or group of children, either physically or emotionally". (DfE "Preventing and Tackling Bullying")

Children can abuse other children. This is generally referred to as **peer on peer abuse** and can take many forms. This can include (but is not limited to) bullying (including cyberbullying), sexual violence and sexual harassment, physical abuse such as hitting, kicking, shaking, biting, hair pulling ,or otherwise causing physical harm; sexting and initiating/hazing type violence and rituals. (Keeping Children Safe In Education)

Bullying can also include: name calling, taunting, mocking, making offensive comments; taking belongings; producing offensive graffiti; gossiping; excluding people from groups and spreading hurtful and untruthful rumours.

Cyber bullying can include sending offensive, upsetting and inappropriate messages by phone, text, instant messenger, through gaming, websites, social media sites and apps, and sending offensive or degrading photos or videos.

Bullying can be emotionally abusive; it can cause severe and adverse effects on children's emotional development.

3) Forms of bullying covered by this policy

FORMS OF BULLYING

Bullying can take many different forms and is behaviour that intentionally and persistently causes distress to others. This policy covers all type of bullying including:

- Bullying related to race, religion, nationality or culture
- Bullying related to SEND (Special Educational Needs or Disability)
- Bullying related to appearance or physical/mental health conditions
- Bullying related to sexual orientation (homophobic bullying)
- Bullying of young carers, children in care or otherwise related to home circumstances
- Sexist, sexual and transphobic bullying
- Bullying via technology, known as online or cyberbullying

<p style="text-align: center;">PHYSICAL BULLYING</p> <p>e.g. hitting; pushing; kicking; tripping; spitting; hair pulling; throwing things; interfering with another's property by stealing / hiding / damaging / intruding upon it; - extortion / threatening demands for money or other items - writing or drawing offensive notes / graffiti about another</p>	<p style="text-align: center;">VERBAL BULLYING</p> <p>e.g. name calling; insulting or offensive remarks; accusing; taunting; put downs - ridiculing another's appearance/way of speaking/disability/personal mannerisms/race/colour/religion; - humiliating another publicly - spreading malicious or nasty rumours; threatening; intimidation; mocking; sarcasm</p>
<p style="text-align: center;">EMOTIONAL BULLYING</p> <p>e.g. excluding/shunning others from group activity/social setting or play; - belittling another's abilities or achievements; - menacing looks/stares; - rude signs or gestures</p>	<p style="text-align: center;">CYBER BULLYING</p> <p>e.g. misuse of e-mails, images, text, blogs, tweets, forums and chat rooms to hurt /embarrass /demean /harass /provoke or humiliate another using perceived anonymity - misuse of mobile phones by text messaging /calls or images – again to hurt /embarrass /demean /harass /provoke or humiliate another using perceived anonymity - unauthorised publication or manipulation of private information; impersonation</p>

These categories may be inter-related

4) School ethos

Each school community within our Trust recognises that bullying, especially if left unaddressed, can have a devastating effect on individuals; it can create a barrier to learning and have serious consequences for mental wellbeing. By effectively preventing and tackling bullying, our school can help to create safe, disciplined environment, where pupils are able to learn and fulfil their potential.

Our Community:

- Monitors and reviews our anti-bullying policy and practice on a regular basis.
- Supports staff to promote positive relationships, to help prevent bullying.
- Recognises that some members of our community may be more vulnerable to bullying and its impact than others; being aware of this will help us to develop effective strategies to prevent bullying from happening and provide appropriate support, if required.
- Will intervene by identifying and tackling bullying behaviour appropriately and promptly.
- Ensures our pupils are aware that bullying concerns will be dealt with sensitively and effectively; that everyone should feel safe to learn and abide by the anti-bullying policy.
- Requires all members of the community to work with the school to uphold the anti-bullying policy.
- Reports back to parents/carers regarding concerns on bullying, dealing promptly with complaints.
- Seeks to learn from good anti-bullying practice elsewhere.

5) **Responding to bullying**

The following steps may be taken when dealing with all incidents of bullying reported to the school:

- If bullying is suspected or reported, the incident will be dealt with immediately by the member of staff who has been approached or witnessed the concern.
- The school will provide appropriate support for the person being bullied – making sure they are not at risk of immediate harm and will involve them in any decision-making, as appropriate.
- All parties involved will be interviewed.
- The designated safeguarding lead will be informed of all bullying issues where there are safeguarding concerns.
- The school will inform other staff members, and parents/ carers, where appropriate.
- Sanctions (as identified within the school behaviour policy) and support for individuals will be implemented, in consultation with all parties concerned.
- If necessary, other agencies may be consulted or involved, such as: the police (if a criminal offence has been committed) or other local services including early help or children's social care (if a child is felt to be at risk of significant harm).
- Where the bullying takes place off school site or outside of normal school hours (including cyberbullying), the school will ensure that the concern is fully investigated. Appropriate

action will be taken, including providing support and implementing sanctions in school in accordance with the school's behaviour policy.

- A clear and precise account of the incident will be recorded by the school in accordance with existing procedures. This will include recording appropriate details regarding decisions and action taken.

Cyberbullying

When responding to cyberbullying concerns, the school will:

- Act as soon as an incident has been reported or identified.
- Provide appropriate support for the person who has been cyberbullied and work with the person who has carried out the bullying to ensure that it does not happen again.
- Encourage the person being bullied to keep any evidence (screenshots) of the bullying activity to assist any investigation.
- Take all available steps where possible to identify the person responsible. This may include:
 - looking at the use of the school systems;
 - identifying and interviewing possible witnesses;
 - contacting the service provider and the police, if necessary.
- Work with the individuals and online service providers to prevent the incident from spreading and assist in removing offensive or upsetting material from circulation. This may include:
 - Support reports to a service provider to remove content if those involved are unable to be identified or if those involved refuse to or are unable to delete content.
 - Confiscating and searching pupils' electronic devices, such as mobile phones, in accordance with the law and also the school behaviour and discipline policy.
(Note: The Trust will ensure they access the DfE 'Searching, screening and confiscation at school' and Childnet Cyberbullying guidance to ensure that the schools powers are used proportionately and lawfully)
 - Requesting the deletion of locally-held content and content posted online if they contravene school behavioural policies.
- Ensure that sanctions are applied to the person responsible for the cyberbullying; the school will take steps to change the attitude and behaviour of the bully, as well as ensuring access to any additional help that they may need.

- Inform the police if a criminal offence has been committed.
- Provide information to staff and pupils regarding steps they can take to protect themselves online. This may include:
 - advising those targeted not to retaliate or reply;
 - providing advice on blocking or removing people from contact lists;
 - helping those involved to think carefully about what private information they may have in the public domain.

Sexual violence or sexual harassment

The initial response to a report from a child is important. It is essential that all victims are reassured that they are being taken seriously and that they will be supported and kept safe. A victim should never be given the impression that they are creating a problem by reporting sexual violence or sexual harassment. Nor should a victim ever be made to feel ashamed for making a report.

All reports of sexual violence or harassment should follow the referral process for safeguarding and child protection at the school.

Discrimination

Harassment on account of race, gender, disability or sexual orientation is unacceptable and is not tolerated within the school environment.

All staff are expected to deal with any discrimination incidents that may occur. They are expected to know how to identify and challenge prejudice and stereotyping; and to support the full range of diverse needs according to a student's individual circumstances.

Any discriminatory incidents are dealt with by the member of staff present, escalating to a Senior Leader where necessary.

What is a discriminatory incident?

Harassment on grounds of race, gender, disability, sexual orientation or other factors such as socio-economic status, can take many forms including verbal or physical abuse, name calling, exclusion from groups or games, unwanted looks or comments, jokes and graffiti .

A racist incident is defined by the Stephen Lawrence Inquiry Report (1999) as: 'Any incident which is perceived to be racist by the victim or any other person'.

Types of discriminatory incident

Types of discriminatory incidents that can occur are:

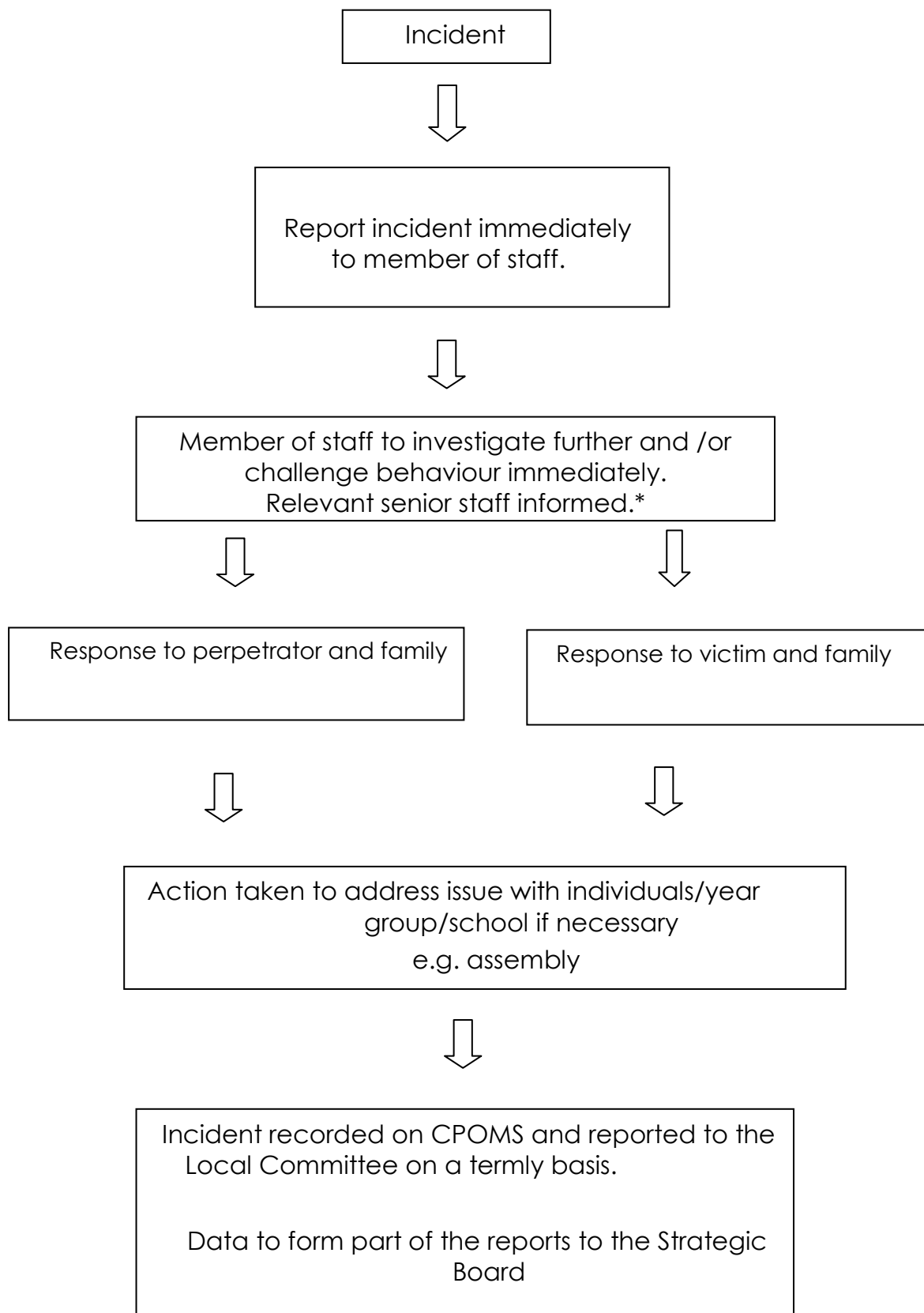
- Physical assault against a person or group because of their colour, ethnicity, nationality, disability, sexual orientation or gender;
- Use of derogatory names, insults and jokes;
- Racist, sexist, homophobic or discriminatory graffiti;
- Provocative behaviour such as wearing racist, sexist, homophobic or discriminatory badges or insignia;
- Bringing discriminatory material into school;
- Verbal abuse and threats;
- Incitement of others to discriminate or bully due to victim's race, disability, gender, or sexual orientation;
- Discriminatory comments in the course of discussion e.g. food, music, religion, dress etc.;
- Refusal to co-operate with other people on grounds of race gender, disability or sexual orientation.

Responding to and reporting incidents

It should be clear to pupils and staff how they report all incidents. All staff, teaching and non-teaching, and pupils should view dealing with incidents as vital to the well-being of the whole school.

There's no national requirement for schools to report any discriminatory incident that occurs at school to any external bodies, whether these incidents involve pupils or not. However, there is a requirement to report such incidents on a termly basis to the local committee and a termly report to the Strategic Board. (see appendix)

Responding to and reporting incidents



Where an allegation is made against a member of staff the allegation will be referred to the staff discipline and grievance policy. *

Supporting pupils

Pupils who have been bullied will be supported by:

- Reassuring the pupil and providing continuous support.
- Offering an immediate opportunity to discuss the experience with a member of staff.
- Being advised to keep a record of the bullying as evidence and discuss how to respond to concerns and build resilience as appropriate.
- Working towards restoring self-esteem and confidence.
- Providing ongoing support; this may include: working and speaking with staff, offering formal counselling, engaging with parents and carers.
- Where necessary, working with the wider community and local/national organisations to provide further or specialist advice and guidance; this could include support through Early Help or Children's Services, or support through Child and Adolescent Mental Health Services (CAMHS).

Pupils who have perpetrated the bullying will be helped by:

- Discussing what happened, establishing the concern and the need to change.
- Informing parents/carers to help change the attitude and behaviour of the child.
- Providing appropriate education and support regarding their behaviour or actions.
- If online, requesting that content be removed and reporting accounts/content to service provider.
- Sanctioning, in line with school behaviour/discipline policy; this may include official warnings, detentions, removal of privileges (including online access when encountering cyberbullying concerns), and fixed-term or permanent exclusions.
- Where necessary, working with the wider community and local/national organisations to provide further or specialist advice and guidance; this may include involvement from the Police or referrals to Early Help, Children's Services, or Child and Adolescent Mental Health Services (CAMHS) as appropriate.

6) Preventing bullying

Environment

The whole school community will:

- Create and support an inclusive environment which promotes a culture of mutual respect, consideration and care for others, which will be upheld by all.
- Recognise that bullying can be perpetrated or experienced by any member of the community, including adults and children (peer on peer abuse).
- Openly discuss differences between people that could motivate bullying, such as: religion, ethnicity, disability, gender, sexuality or appearance related difference. Also children with different family situations, such as looked after children or those with caring responsibilities.
- Challenge practice and language which does not uphold the values of tolerance, non-discrimination and respect towards others.
- Be encouraged to use technology, especially mobile phones and social media positively and responsibly.

- Work with staff, the wider community and outside agencies to prevent and tackle concerns including all forms of prejudice-driven bullying.
- Actively create "safe spaces" for vulnerable children and young people.
- Celebrate success and achievements to promote and build a positive school ethos.

Policy and Support

The whole school community will:

- Provide a range of approaches for pupils, staff and parents/carers to access support and report concerns.
- Regularly update and evaluate our practice to take into account the developments of technology and provide up-to-date advice and education to all members of the community regarding positive online behaviour.
- Take appropriate, proportionate and reasonable action, in line with existing school policies, for any bullying brought to the schools attention, which involves or effects pupils, even when they are not on school premises; for example, when using school transport or online, etc.
- Implement appropriate disciplinary sanctions; the consequences of bullying will reflect the seriousness of the incident, so that others see that bullying is unacceptable.
- Use a variety of techniques to resolve the issues between those who bully, and those who have been bullied.

Education and Training

The school community will:

- Train all staff, including: teaching staff, support staff (e.g. administration staff, lunchtime support staff and site support staff) and pastoral staff, to identify all forms of bullying and take appropriate action, following the school's policy and procedures (including recording and reporting incidents).
- Consider a range of opportunities and approaches for addressing bullying throughout the curriculum and other activities, such as: through displays, assemblies, peer support, the school/student council, etc.
- Provide systematic opportunities to develop pupils' social and emotional skills, including building their resilience and self-esteem.

7) Involvement of pupils

We will:

- Involve pupils in policy writing and decision making, to ensure that they understand the school's approach and are clear about the part they have to play to prevent bullying.

- Regularly canvas children and young people's views on the extent and nature of bullying.
- Ensure that all pupils know how to express worries and anxieties about bullying.
- Ensure that all pupils are aware of the range of sanctions which may be applied against those engaging in bullying.
- Involve pupils in anti-bullying campaigns in school
- Publicise the details of internal support, as well as external helplines and websites.
- Offer support to pupils who have been bullied and to those who are bullying in order to address the problems they have.

8) Involvement and liaison with parents and carers

We will:

- Take steps to involve parents and carers in developing procedures, to ensure they are aware that the school does not tolerate any form of bullying.
- Make sure that key information about bullying (including policies and named points of contact) is available to parents/carers in a variety of formats.
- Ensure all parents/carers know who to contact if they are worried about bullying and where to access independent advice.
- Work with all parents/carers and the local community to address issues beyond the school gates that give rise to bullying.
- Ensure all parents/carers know about our complaints procedure and how to use it effectively, to raise concerns in an appropriate manner.

9) Monitoring and evaluation

The Local Committee and the Strategic Board will review reports from the Headteacher on instances of bullying during the year to ensure that procedures are adequate.

10) Useful links and supporting organisations

- Anti-Bullying Alliance: www.anti-bullyingalliance.org.uk
- Childline: www.childline.org.uk
- Family Lives: www.familylives.org.uk
- Kidscape: www.kidscape.org.uk
- MindEd: www.minded.org.uk
- NSPCC: www.nspcc.org.uk
- The BIG Award: www.bullyinginterventiongroup.co.uk/index.php
- Restorative Justice Council: www.restorativejustice.org.uk
- The Diana Award: www.diana-award.org.uk

- Victim Support: www.victimsupport.org.uk
- Young Minds: www.youngminds.org.uk
- Young Carers: www.youngcarers.net
- The Restorative Justice Council:
www.restorativejustice.org.uk/restorative-practice-schools

SEND

- Changing Faces: www.changingfaces.org.uk
- Mencap: www.mencap.org.uk
- Anti-Bullying Alliance Cyberbullying and children and young people with SEN and disabilities:
www.cafamily.org.uk/media/750755/cyberbullying_and_send-module_final.pdf
- DfE: SEND code of practice:
www.gov.uk/government/publications/send-code-of-practice-0-to-25

Cyberbullying

- Childnet International: www.childnet.com
- Digizen: www.digizen.org
- Internet Watch Foundation: www.iwf.org.uk
- Think U Know: www.thinkuknow.co.uk
- UK Safer Internet Centre: www.saferinternet.org.uk
- The UK Council for Child Internet Safety (UKCCIS)
www.gov.uk/government/groups/uk-council-for-child-internet-safety-ukccis

Race, religion and nationality

- Anne Frank Trust: www.annefrank.org.uk
- Kick it Out: www.kickitout.org
- Report it: www.report-it.org.uk
- Stop Hate: www.stophateuk.org
- Tell Mama: www.tellmamauk.org
- Educate against Hate: www.educateagainsthate.com/
- Show Racism the Red Card: www.srtrc.org/educational

LGBT

- Barnardos LGBT Hub:
www.barnardos.org.uk/what-we-do/our-work/lgbtq.htm
- Metro Charity: www.metrocentreonline.org
- EACH: www.eachaction.org.uk
- Proud Trust: www.theproudtrust.org
- Schools Out: www.schools-out.org.uk

- Stonewall: www.stonewall.org.uk

Sexual harassment and sexual bullying

- Ending Violence Against Women and Girls (EVAW) www.endviolenceagainstwomen.org.uk
- A Guide for Schools: www.endviolenceagainstwomen.org.uk/data/files/resources/71/EVAW-Coalition-Schools-Guide.pdf
- Disrespect No Body: www.gov.uk/government/publications/disrespect-nobody-campaign-posters
- Anti-bullying Alliance: advice for school staff and professionals about developing effective anti-bullying practice in relation to sexual bullying: www.anti-bullyingalliance.org.uk/tools-information/all-about-bullying/sexual-and-gender-related

Note: Additional links can be found in 'Preventing and Tackling Bullying' (July 2017) www.gov.uk/government/publications/preventing-and-tackling-bullying